

**Dredging & Reclamation Works Programme Summary
(based on Initial Works Programme Rev. 0)**

ID	Task Name	Duration	Start	Timeline																
				2010	2011	2012	2013	2014	2015											
				Q4	Q1	Q2	Q3	Q4	Q1	Q2	Q3	Q4	Q1	Q2	Q3	Q4	Q1	Q2	Q3	Q4
1	HK/2009/02-Marine & Reclamation Works	2008 d	Thu 28/1/10	[Summary bar from Q4 2009 to Q4 2015]																
2	Contract Commencement	0 d	Thu 28/1/10	[Milestone diamond at start of timeline]																
3	General	1879 d	Mon 22/2/10	[Summary bar from Q1 2010 to Q4 2015]																
4	Submission & obtain approval for marine GI	21 d	Mon 22/2/10	[Task bar in Q1 2010]																
5	Stage 1 Marine GI for reclamation	30 d	Mon 15/3/10	[Task bar in Q1 2010]																
6	Engineer's Design review for Dredging of WCR1, WCR2 & WCR4	30 d	Mon 22/3/10	[Task bar in Q1 2010]																
7	Relocation of New Star Ferry Pier	0 d	Tue 18/3/14	[Milestone diamond in Q3 2014]																
8	Demolition of Existing Star Ferry Pier	100 d	Tue 18/3/14	[Task bar in Q3 2014]																
9	Stage 2 Marine GI for Reclamation	14 d	Tue 18/3/14	[Task bar in Q3 2014]																
10	Engineer's Design review for Dredging of WCR3	21 d	Tue 25/3/14	[Task bar in Q3 2014]																
11	Complete Diversion of Hung Hing Road Traffic Back to Original	20 d	Fri 6/2/15	[Task bar in Q1 2015]																
12	Excavate & remove top of d-wall for permanent seawall construction	50 d	Wed 25/2/15	[Task bar in Q1 2015]																
13	Submarine Outfall	500 d	Tue 21/9/10	[Summary bar from Q3 2010 to Q4 2011]																
14	Dredging, Laying and Backfilling of Submarine Outfall Pipe at Sea	500 d	Tue 21/9/10	[Task bar from Q3 2010 to Q4 2011]																
15	Phase 1 - WCR1	158 d	Wed 21/4/10	[Summary bar from Q1 2010 to Q4 2010]																
16	Mobilization of plants	1 d	Wed 21/4/10	[Task bar in Q1 2010]																
17	Seabed dredging	63 d	Wed 21/4/10	[Task bar in Q1 2010]																
18	Bedding Filling and Permanent seawall (precast cassion)	60 d	Tue 22/6/10	[Task bar in Q2 2010]																
19	Bulk reclamation	37 d	Fri 20/8/10	[Task bar in Q2 2010]																
20	Phase 2 - WCR2	149 d	Thu 1/3/12	[Summary bar from Q3 2011 to Q4 2012]																
21	Mobilization of plants	1 d	Thu 1/3/12	[Task bar in Q3 2011]																
22	Temp seawall and Seabed dredging	77 d	Thu 1/3/12	[Task bar in Q3 2011]																
23	Bulk reclamation	73 d	Wed 16/5/12	[Task bar in Q4 2011]																
24	Phase 3 - TWCR4 & WCR4	98 d	Sat 28/4/12	[Summary bar from Q4 2011 to Q4 2012]																
25	Mobilization of plants	1 d	Sat 28/4/12	[Task bar in Q4 2011]																
26	Temp Seawall and Seabed dredging	75 d	Sat 28/4/12	[Task bar in Q4 2011]																
27	Bulk & temp reclamation	24 d	Wed 11/7/12	[Task bar in Q3 2012]																
28	Phase 4 - WCR3	294 d	Tue 18/3/14	[Summary bar from Q3 2013 to Q4 2014]																
29	Mobilization of plants	1 d	Tue 18/3/14	[Task bar in Q3 2013]																
30	Seabed dredging for Permanent Seawall	112 d	Tue 18/3/14	[Task bar in Q3 2013]																
31	Backfill and permanent seawall (precast cassion)	108 d	Tue 8/7/14	[Task bar in Q4 2013]																
32	Bulk reclamation	74 d	Fri 24/10/14	[Task bar in Q4 2013]																
33	Phase 5 - Construct Permanent Seawall Blocks along curved coastline & Remove TWCR4	105 d	Wed 15/4/15	[Summary bar from Q4 2014 to Q4 2015]																
34	Mobilization of plants	1 d	Wed 15/4/15	[Task bar in Q4 2014]																
35	Dredging and Filling for permanent seawall construction	50 d	Wed 15/4/15	[Task bar in Q4 2014]																
36	Construction of Permanent Seawall Blocks for curved coastline	56 d	Wed 3/6/15	[Task bar in Q1 2015]																
37	Remove temp seawall and reinstate the location of TWCR4	30 d	Mon 29/6/15	[Task bar in Q1 2015]																

Project: Reclamation Works Programme
Date: Tue 9/3/10

Task		Summary		Rolled Up Progress		Project Summary	
Progress		Rolled Up Task		Split		Group By Summary	
Milestone		Rolled Up Milestone		External Tasks		Deadline	

Activity ID	Cal ID	Activity Description	Orig Dur	Early Start	Early Finish	2010 2011 2012 2013 2014 2015 2016 2017												
TCBR1E (TS1 Area)																		
105	1	TCBR1E(TS1)-dredging+rockfill(pre. for seawall)	86	03DEC10*	26FEB11													
110	1	TCBR1E (TS1)-temporary reclamation	69	28JAN11*	06APR11													
155	1	TCBR1E (TS1)- removal of temporary reclamation	27	30JAN12*	25FEB12													
TCBR4																		
100	1	Maintenance dredging for navigation safety for	7	20NOV10*	26NOV10													
TCBR2 + TCBR3 (TS2 Area)																		
115	1	TCBR2&TCBR3(TS2)- Maintenance dredging for	5	15NOV10*	19NOV10													
117	1	TCBR2&TCBR3(TS2)-dredge+rockfill seabed	64	16DEC11*	17FEB12													
120	1	TCBR2&TCBR3(TS2) --temporary reclamation	115	26FEB12*	19JUN12													
160	1	TCBR2&TCBR3(TS2-removal temporary reclamation	57	18AUG13*	13OCT13													
TCBR1W (TS4 Area)																		
125	1	TCBR1W(TS4)-dredging+rockfill(pre. for seawall)	40	19DEC10*	27JAN11													
130	1	TCBR1W(TS4) --temporary reclamation	68	28JAN11	05APR11													
165	1	TCBR1W(TS4)--removal temporary reclamation	26	27OCT13*	21NOV13													
TPCWAE																		
135	1	TPCWAE-dredging+rockfill(pre. for seawall)	55	03DEC10*	26JAN11													
140	1	TPCWAE --temporary reclamation	77	27JAN11	13APR11													
170	1	TPCWAE--removal temporary reclamation	28	28SEP13*	25OCT13													
TPCWAW																		
145	1	TPCWAW-dredging+rockfill(pre. for seawall)	47	28OCT13*	13DEC13													
150	1	TPCWAW --temporary reclamation	83	14DEC13	06MAR14													
175	1	TPCWAW--removal temporary reclamation	50	02JUL15*	20AUG15													

 Early Bar
 Progress Bar
 Critical Activity

EP02 CHINA STATE CONSTRUCTION ENGG LTD Sheet 1 of 1
 CONTRACT NO. HY/2009/15: CENTRAL WAN CHAI BYPASS- TUNNEL (CBTS SECTION)

Prepared based on IWP Rev. 0
 Date Prepared: 28 Oct 2010

Activity ID	Activity Name	Rem Dur	Start	Finish	2014																	
					March					April				May				June				
					7	24	03	10	17	24	31	07	14	21	28	05	12	19	26	02	09	16
0240-1134	Noise Barrier Panel - Submission	0	29-Jan-14 A	28-Feb-14 A	Noise Barrier Panel - Submission																	
0240-1136	Noise Barrier Panel - Design ER Review/Resubmission	56	01-Mar-14 A	14-May-14	Noise Barrier Panel - Design ER Review/Resubmission																	
0240-1137	Noise Barrier Panel - Design No Adverse Comment	28	15-May-14	11-Jun-14	Noise Barrier Panel - Design No Adverse Comment																	
0240-1138	Noise Barrier Panel - Fabrication Delivery	60	12-Jun-14	10-Aug-14	Noise Barrier Panel - Fabrication Delivery																	
0240-1050	Temp Bridge "TB" & "TC" Design - Prep & Submit	42	21-Feb-14 A	30-Apr-14	Temp Bridge "TB" & "TC" Design - Prep & Submit																	
0240-1060	Temp Bridge "TB" & "TC" Design - ER review and comment	28	01-May-14	28-May-14	Temp Bridge "TB" & "TC" Design - ER review and comment																	
0240-1070	Temp Bridge "TB" & "TC" Design - Resubmission	30	29-May-14	27-Jun-14	Temp Bridge "TB" & "TC" Design - Resubmission																	
02.5 - Bridge Segment/Beam Off-site Precasting																						
0250-1720.04	Precast Beam Bridge E E1D1-G	0	27-Jan-14 A	11-Mar-14 A	Precast Beam Bridge E E1D1-G																	
0250-1720.05	Precast Beam Bridge E 1819-A	15	10-Mar-14 A	03-Apr-14	Precast Beam Bridge E 1819-A																	
0250-1720.06	Precast Beam Bridge E 1819-B	18	04-Apr-14	21-Apr-14	Precast Beam Bridge E 1819-B																	
0250-1720.07	Precast Beam Bridge E 1819-C	18	22-Apr-14	09-May-14	Precast Beam Bridge E 1819-C																	
0250-1720.08	Precast Beam Bridge E 1819-D	18	10-May-14	27-May-14	Precast Beam Bridge E 1819-D																	
0250-1720.09	Precast Beam Bridge E 1718-A	18	28-May-14	14-Jun-14	Precast Beam Bridge E 1718-A																	
0250-1720.10	Precast Beam Bridge E 1718-B	18	15-Jun-14	02-Jul-14	Precast Beam Bridge E 1718-B																	
0250-1650.20	Bridge D1 Pier D02 Precasting Segment (1-17) - Mould S1	0	23-Dec-13 A	28-Feb-14 A	Bridge D1 Pier D02 Precasting Segment (1-17) - Mould S1																	
0250-1900	Bridg C4 Pier 29 T-span Segment Off-site Casting (13 nos.)	12	11-Feb-14 A	31-Mar-14	Bridg C4 Pier 29 T-span Segment Off-site Casting (13 nos.)																	
0250-1910	Bridg C4 Pier 30 T-span Segment Off-site Casting (11 nos.)	18	06-Mar-14 A	06-Apr-14	Bridg C4 Pier 30 T-span Segment Off-site Casting (11 nos.)																	
0250-1930	Bridg C4 Pier 28 End-span Segment Off-site Casting (5 nos.)	15	07-Apr-14	21-Apr-14	Bridg C4 Pier 28 End-span Segment Off-site Casting (5 nos.)																	
0250-1920	Bridg C4 Pier 31 T-span Segment Off-site Casting (13 nos.)	31	11-Apr-14	11-May-14	Bridg C4 Pier 31 T-span Segment Off-site Casting (13 nos.)																	
0250-1940	Bridg C4 Pier 32 End-span Segment Off-site Casting (5 nos.)	15	28-Apr-14	12-May-14	Bridg C4 Pier 32 End-span Segment Off-site Casting (5 nos.)																	
0250-1950	Bridg C5 Pier 33 T-span Segment Off-site Casting (11 nos.)	27	16-May-14	11-Jun-14	Bridg C5 Pier 33 T-span Segment Off-site Casting (11 nos.)																	
0250-1970	Bridg C5 Pier 32 End-span Segment Off-site Casting (6 nos.)	18	17-May-14	03-Jun-14	Bridg C5 Pier 32 End-span Segment Off-site Casting (6 nos.)																	
0250-1980	Bridg C5 Abut D12 E-span Segment Off-site Casting (6 nos.)	19	10-Jun-14	28-Jun-14	Bridg C5 Abut D12 E-span Segment Off-site Casting (6 nos.)																	
0250-1960	Bridg C5 Pier 34 T-span Segment Off-site Casting (9 nos.)	23	16-Jun-14	08-Jul-14	Bridg C5 Pier 34 T-span Segment Off-site Casting (9 nos.)																	
03 - PRELIMINARY WORKS																						
03.3 - Interface Works																						
0330-1300	Erect Interim Temp Carpark for HGHK	0	10-Feb-14 A	12-Mar-14 A	Erect Interim Temp Carpark for HGHK																	
0330-1350	Erect Special Hoarding at Portion IVB	36	20-Mar-14	05-May-14	Erect Special Hoarding at Portion IVB																	
05 - SECTION 2 & 2A OF THE WORKS																						
05.1 - Cut & Cover Tunnel Ch 4855-4932 (APS Footprint)																						
05.1.2 - ELS																						
0512-1105	S3 (-5.5mPD) - S1-S3 Excav (6336m3)	0	14-Feb-14 A	09-Mar-14 A	S3 (-5.5mPD) - S1-S3 Excav (6336m3)																	
0512-1107	S3 (-5.5mPD) - S1-S3 ELS	1	10-Mar-14 A	20-Mar-14	S3 (-5.5mPD) - S1-S3 ELS																	
0512-1140	S3 (-5.5mPD) - S8 Excav (5940m3)	0	19-Feb-14 A	06-Mar-14 A	S3 (-5.5mPD) - S8 Excav (5940m3)																	
0512-1145	S3 (-5.5mPD) - S8 ELS	0	07-Mar-14 A	16-Mar-14 A	S3 (-5.5mPD) - S8 ELS																	
0512-1149	S4 (-9.5mPD) - S8 Excav (5940m3)	11	17-Mar-14 A	30-Mar-14	S4 (-9.5mPD) - S8 Excav (5940m3)																	
0512-1150	S4 (-9.5mPD) - S1-S3 Excav (6336m3)	15	21-Mar-14	04-Apr-14	S4 (-9.5mPD) - S1-S3 Excav (6336m3)																	
0512-1153	S4 Pump Test	14	31-Mar-14	13-Apr-14	S4 Pump Test																	
0512-1154	S4 (-9.5mPD) - S8 ELS	9	07-Apr-14	15-Apr-14	S4 (-9.5mPD) - S8 ELS																	
0512-1155	S4 (-9.5mPD) - S1-S3 ELS	8	14-Apr-14	21-Apr-14	S4 (-9.5mPD) - S1-S3 ELS																	
0512-1159	S5 (-13.0mPD) S8 Excav (5198m3)	12	16-Apr-14	27-Apr-14	S5 (-13.0mPD) S8 Excav (5198m3)																	
0512-1160	S5 (-13.0mPD) S1-S3 Excav (5544m3)	13	22-Apr-14	04-May-14	S5 (-13.0mPD) S1-S3 Excav (5544m3)																	
0512-1163	S5 (-13.0mPD) S8 ELS	8	28-Apr-14	05-May-14	S5 (-13.0mPD) S8 ELS																	

- █ Remaining Level of Effort
- █ Actual Level of Effort
- █ Actual Work
- █ Remaining Work
- █ Critical Remaining Work
- ◆ Milestone

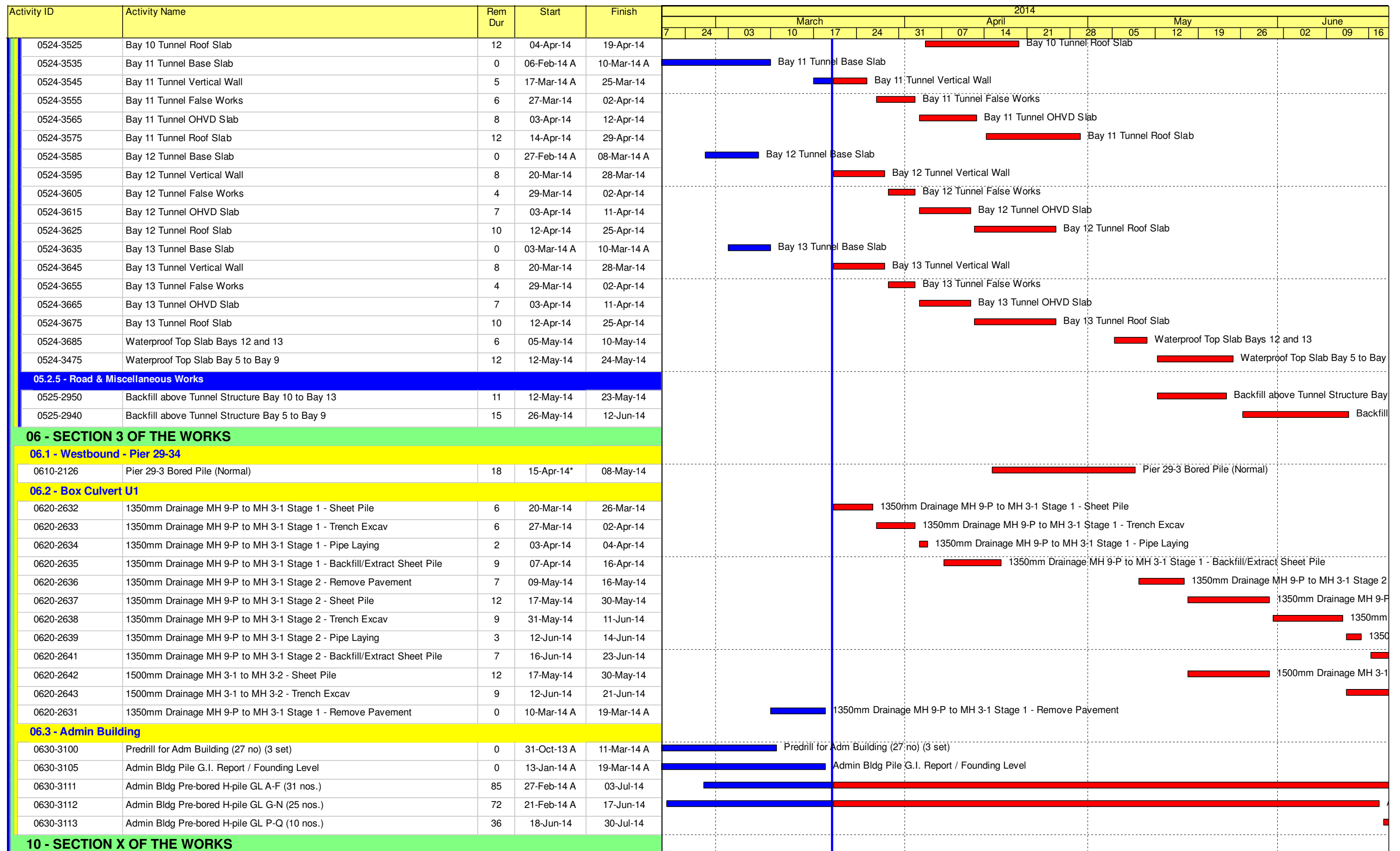
Contract HY/2009/19

Three Month Rolling Programme (20 Mar 2014 to 19 Jun 2014)

3MRP

3MRP - Mar 2014 to Jun 2014

Page 2 of 9



- Remaining Level of Effort
- Actual Level of Effort
- Actual Work
- Remaining Work
- Critical Remaining Work
- ◆ Milestone

Contract HY/2009/19

Three Month Rolling Programme (20 Mar 2014 to 19 Jun 2014)

3MRP

3MRP - Mar 2014 to Jun 2014

Activity ID	Activity Name	Rem Dur	Start	Finish	2014																	
					March					April				May				June				
					7	24	03	10	17	24	31	07	14	21	28	05	12	19	26	02	09	16
10.1 - E/B Bridges (Bridge D, E and F)																						
10.1.1 - Marine Pier Construction																						
Pier F03 to F15																						
1011-2405	F9 Bearing Installation	0	15-Feb-14 A	21-Feb-14 A	F9 Bearing Installation																	
1011-2433	F10 Bearing Installation	0	22-Feb-14 A	28-Feb-14 A	F10 Bearing Installation																	
1011-2375	F11 Bearing Installation	3	12-Mar-14 A	22-Mar-14	F11 Bearing Installation																	
1011-2465	F12 Bearing Installation	0	12-Feb-14 A	20-Feb-14 A	F12 Bearing Installation																	
1011-2495	F13 Bearing Installation	0	01-Mar-14 A	07-Mar-14 A	F13 Bearing Installation																	
1011-2525	F14 Bearing Installation	0	05-Mar-14 A	11-Mar-14 A	F14 Bearing Installation																	
1011-3175	F10 Dolphin Construction	0	02-Dec-13 A	04-Mar-14 A	F10 Dolphin Construction																	
1011-3185	F9 Dolphin Construction	0	09-Dec-13 A	15-Mar-14 A	F9 Dolphin Construction																	
1011-3195	F8 Dolphin Construction	4	16-Dec-13 A	24-Mar-14	F8 Dolphin Construction																	
1011-3205	F11 Dolphin Construction	21	21-Dec-13 A	14-Apr-14	F11 Dolphin Construction																	
1011-3215	F12 Dolphin Construction	28	08-Jan-14 A	24-Apr-14	F12 Dolphin Construction																	
1011-3225	F13 Dolphin Construction	30	26-Mar-14	03-May-14	F13 Dolphin Construction																	
1011-3235	F14 Dolphin Construction	30	04-Apr-14	13-May-14	F14 Dolphin Construction																	
1011-3255	F7 Dolphin Construction	30	28-Apr-14	03-Jun-14	F7 Dolphin Construction																	
1011-3245	F6 Dolphin Construction	30	07-May-14	11-Jun-14	F6 Dolphin Construction																	
1011-3265	F5 Dolphin Construction	30	15-May-14	19-Jun-14	F5 Dolphin Construction																	
1011-3271	F4 Dolphin Construction	24	03-Apr-14*	05-May-14	F4 Dolphin Construction																	
1011-3272	F3 Dolphin Construction	24	28-Apr-14	26-May-14	F3 Dolphin Construction																	
1011-3273	F2 Dolphin Construction	24	20-May-14	17-Jun-14	F2 Dolphin Construction																	
1011-3274	F1 Dolphin Construction	24	11-Jun-14	09-Jul-14	F1 Dolphin Construction																	
1011-3296	F10 Dolphin Fender Installation	9	16-Jun-14	25-Jun-14	F10 Dolphin Fender Installation																	
1011-2055	Remove Temporary Storage Platform (3 nos)	7	06-Mar-14 A	27-Mar-14	Remove Temporary Storage Platform (3 nos)																	
1011-3275	Extract Temporary Piles at F9 and F10	7	17-Mar-14 A	27-Mar-14	Extract Temporary Piles at F9 and F10																	
1011-3285	Extract Temporary Piles at F11 and F12	9	28-Mar-14	08-Apr-14	Extract Temporary Piles at F11 and F12																	
1011-3295	Extract Temporary Piles at F13 and F14	9	03-Apr-14	14-Apr-14	Extract Temporary Piles at F13 and F14																	
10.1.2 - Land Pier Construction																						
Pier D01 to D04																						
1012-1395	Pier D01 Crosshead Temp Work Design Submit/Approve	0	21-Oct-13 A	01-Mar-14 A	Pier D01 Crosshead Temp Work Design Submit/Approve																	
1012-1398	Pier D01 Fabricate Platform	7	12-Mar-14 A	27-Mar-14	Pier D01 Fabricate Platform																	
1012-1399	Pier D01 Erect Platform for Crosshead	6	28-Mar-14	03-Apr-14	Pier D01 Erect Platform for Crosshead																	
1012-1400	Pier D01 Construct Crosshead	18	04-Apr-14	28-Apr-14	Pier D01 Construct Crosshead																	
1012-1570	Pier D01 Bearing installation	5	29-Apr-14	05-May-14	Pier D01 Bearing installation																	
1012-1490	Pier D04 Construct Crosshead	0	17-Feb-14 A	08-Mar-14 A	Pier D04 Construct Crosshead																	
1012-1540	Pier D04 Bearing Installation	0	10-Mar-14 A	14-Mar-14 A	Pier D04 Bearing Installation																	
1012-1440	Pier D03 Construct Pad Footing	0	27-Feb-14 A	03-Mar-14 A	Pier D03 Construct Pad Footing																	
1012-1450	Pier D03 Construct Pier/Column	0	04-Mar-14 A	17-Mar-14 A	Pier D03 Construct Pier/Column																	
1012-1460	Pier D03 Construct Crosshead	8	18-Mar-14 A	28-Mar-14	Pier D03 Construct Crosshead																	
1012-1550	Pier D03 Bearing Installation	5	29-Mar-14	03-Apr-14	Pier D03 Bearing Installation																	
1012-1410	Pier D02 Construct Pad Footing	3	19-Mar-14 A	22-Mar-14	Pier D02 Construct Pad Footing																	
1012-1420	Pier D02 Construct Pier/Column	6	24-Mar-14	29-Mar-14	Pier D02 Construct Pier/Column																	
1012-1430	Pier D02 Construct Crosshead	12	31-Mar-14	14-Apr-14	Pier D02 Construct Crosshead																	

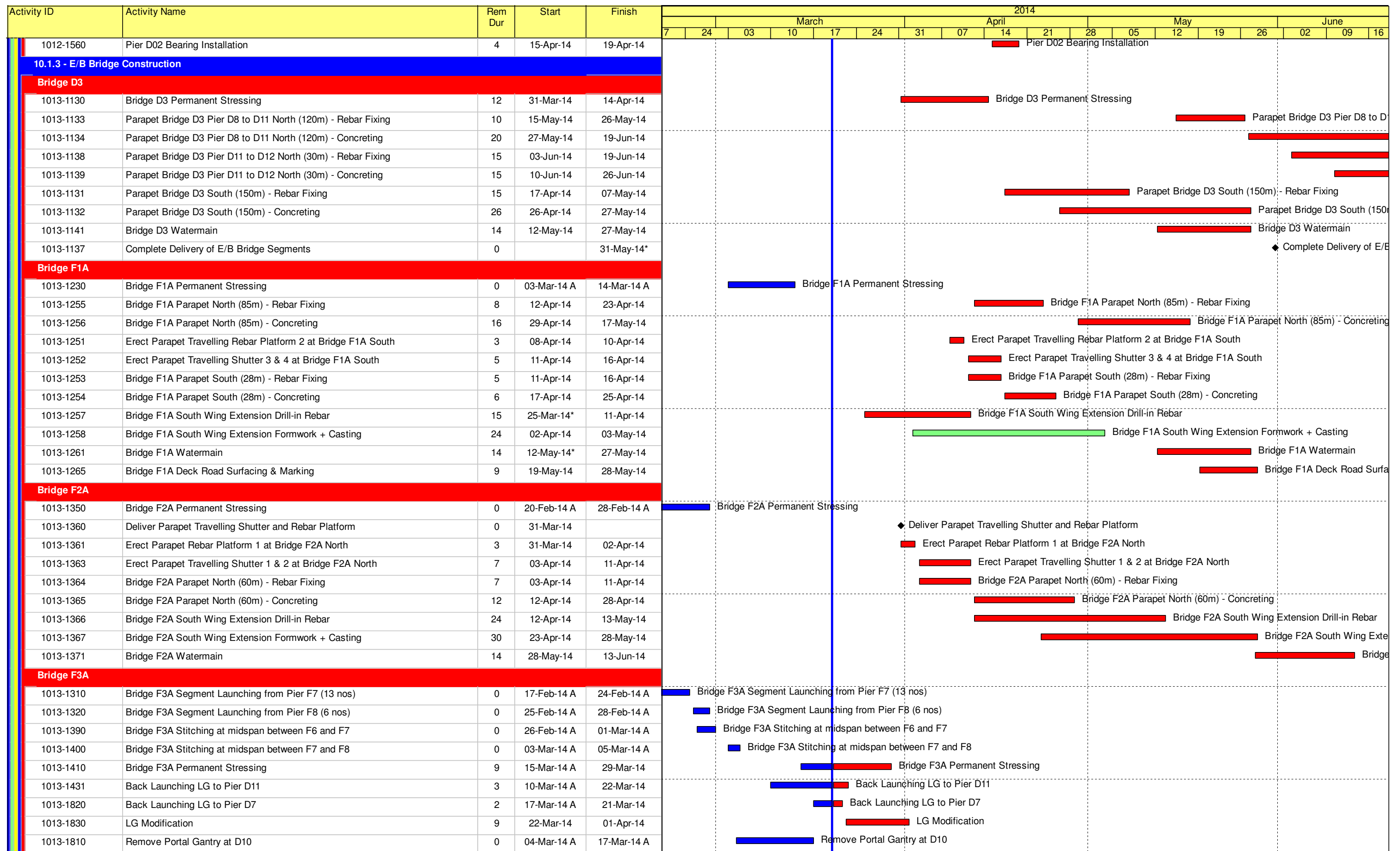
- Remaining Level of Effort
- Actual Level of Effort
- Actual Work
- Remaining Work
- Critical Remaining Work
- ◆ Milestone

Contract HY/2009/19

Three Month Rolling Programme (20 Mar 2014 to 19 Jun 2014)

3MRP

3MRP - Mar 2014 to Jun 2014



- █ Remaining Level of Effort
- █ Actual Level of Effort
- █ Actual Work
- █ Remaining Work
- █ Critical Remaining Work
- ◆ Milestone

Contract HY/2009/19

Three Month Rolling Programme (20 Mar 2014 to 19 Jun 2014)

3MRP

3MRP - Mar 2014 to Jun 2014

Activity ID	Activity Name	Rem Dur	Start	Finish	2014																	
					March					April				May				June				
					7	24	03	10	17	24	31	07	14	21	28	05	12	19	26	02	09	16
1013-1780	Parapet Temp. Work Design + ICE	9	11-Feb-14 A	29-Mar-14	Parapet Temp. Work Design + ICE																	
1013-1800	Parapet Temp. Work Fabrication	9	17-Mar-14 A	29-Mar-14	Parapet Temp. Work Fabrication																	
1013-1790	Parapet Temp. Work Design ER No Adverse Comment	15	31-Mar-14	17-Apr-14	Parapet Temp. Work Design ER No Adverse Comment																	
1013-1811	Construct Int. Double Noise Encl. Bridge F1A /F2A (111m)	42	29-May-14	18-Jul-14	Construct Int. Double Noise Encl. Bridge F1A /F2A (111m)																	
10.1.4 - Bridge E / Hing Fat Slip Road																						
Pier Construction																						
1014-1050	Pier E1b Construct Crosshead	9	20-Feb-14 A	29-Mar-14	Pier E1b Construct Crosshead																	
1014-1080	Pier E1a Construct Crosshead	9	20-Feb-14 A	29-Mar-14	Pier E1a Construct Crosshead																	
1014-1090	Pier E1a/E1b Bearing installation	6	31-Mar-14	07-Apr-14	Pier E1a/E1b Bearing installation																	
Bridge Construction																						
1014-1171	Bridge E - Pier E1 to E2 - Precast Beam (3 nos.) + Adjustement	5	08-Apr-14	12-Apr-14	Bridge E - Pier E1 to E2 - Precast Beam (3 nos.) + Adjustement																	
1014-1172	Bridge E - Pier E1 to E2 - Diaphragm	7	14-Apr-14	23-Apr-14	Bridge E - Pier E1 to E2 - Diaphragm																	
1014-1173	Bridge E - Pier E1 to E2 - Top Slab	7	24-Apr-14	02-May-14	Bridge E - Pier E1 to E2 - Top Slab																	
1014-1174	Bridge E - Pier E1 to E2 - Temporary Parapet	7	03-May-14	10-May-14	Bridge E - Pier E1 to E2 - Temporary Parapet																	
1014-1175	Bridge E - Pier E1 to D1 - Precast Beam (3 nos.)	5	24-May-14	29-May-14	Bridge E - Pier E1 to D1 - Precast Beam (3 nos.)																	
10.5 - Temporary Bridge																						
10.5.1 - Temporary Bridge 'TA'																						
1051-1017	Temporary Bridge TA1 - Bridge Decking + Tie-in to Existing HFSR	6	23-Sep-13 A	10-May-14	Temporary Bridge TA1 - Bridge Decking + Tie-in to Existing HFSR																	
1051-1018	Temporary Bridge TA1 - Parapet	6	13-Jan-14 A	10-May-14	Temporary Bridge TA1 - Parapet																	
10.5.3 - Temporary Bridge 'TD'																						
1053-1010	"TD" - Pier F8 to F10 Tower Erection (3 nos.)	12	15-Apr-14	30-Apr-14	"TD" - Pier F8 to F10 Tower Erection (3 nos.)																	
1053-1011	"TD" - Pier F8 to F10 Beam Erection	12	02-May-14	15-May-14	"TD" - Pier F8 to F10 Beam Erection																	
1053-1012	"TD" - Pier F8 to F10 Bond Deck Erection	15	16-May-14	03-Jun-14	"TD" - Pier F8 to F10 Bond Deck Erection																	
1053-1013	"TD" - Pier F8 to F10 Slab Construction	12	04-Jun-14	17-Jun-14	"TD" - Pier F8 to F10 Slab Construction																	
1053-1014	"TD" - Pier F8 to F10 Parapet	12	18-Jun-14	02-Jul-14	"TD" - Pier F8 to F10 Parapet																	
1053-1015	"TD" - Pier F8 to F10 Connection to Bridge F4/F5	18	18-Jun-14	09-Jul-14	"TD" - Pier F8 to F10 Connection to Bridge F4/F5																	
1053-1021	"TD" - Pier F10 to F14 Tower Erection	18	16-May-14	06-Jun-14	"TD" - Pier F10 to F14 Tower Erection																	
1053-1061	"TD" - Pier F10 to F14 Beam Erection	18	07-Jun-14	27-Jun-14	"TD" - Pier F10 to F14 Beam Erection																	
10.6 - Tunnel Approach Ramp																						
10.6.1 - Approach Ramp (Excluding Portion IIB)																						
Bored Piles																						
1061-1670	Remaining Pre-drilling for Approach Ramp Bored Piles	28	19-Jul-13 A	24-Apr-14	Remaining Pre-drilling for Approach Ramp Bored Piles																	
1061-1720	Bored Pile Ramp - BM39	0	10-Jan-14 A	15-Mar-14 A	Bored Pile Ramp - BM39																	
1061-1770	Bored Pile Ramp - BM35	0	08-Feb-14 A	27-Feb-14 A	Bored Pile Ramp - BM35																	
1061-1780	Bored Pile Ramp - BM48	0	12-Feb-14 A	22-Feb-14 A	Bored Pile Ramp - BM48																	
1061-1785	Bored Pile Ramp - BM26	6	17-Mar-14 A	26-Mar-14	Bored Pile Ramp - BM26																	
1061-1790	Bored Pile Ramp - BM19	15	22-Mar-14*	09-Apr-14	Bored Pile Ramp - BM19																	
1061-1810	Bored Pile Ramp - BM25	15	27-Mar-14	14-Apr-14	Bored Pile Ramp - BM25																	
1061-1820	Bored Pile Ramp - BM16	15	10-Apr-14	29-Apr-14	Bored Pile Ramp - BM16																	
1061-1830	Bored Pile Ramp - BM24	15	15-Apr-14	05-May-14	Bored Pile Ramp - BM24																	
1061-1840	Bored Pile Ramp - BM18	15	30-Apr-14	17-May-14	Bored Pile Ramp - BM18																	
1061-1850	Bored Pile Ramp - BM27	15	06-May-14	22-May-14	Bored Pile Ramp - BM27																	
1061-1860	Bored Pile Ramp - BM17	15	19-May-14	05-Jun-14	Bored Pile Ramp - BM17																	
1061-1870	Bored Pile Ramp - BM28	15	23-May-14	10-Jun-14	Bored Pile Ramp - BM28																	

- █ Remaining Level of Effort
- █ Actual Level of Effort
- █ Actual Work
- █ Remaining Work
- █ Critical Remaining Work
- ◆ Milestone







Contract HY/2009/19

Three Month Rolling Programme (20 Mar 2014 to 19 Jun 2014)

3MRP

3MRP - Mar 2014 to Jun 2014

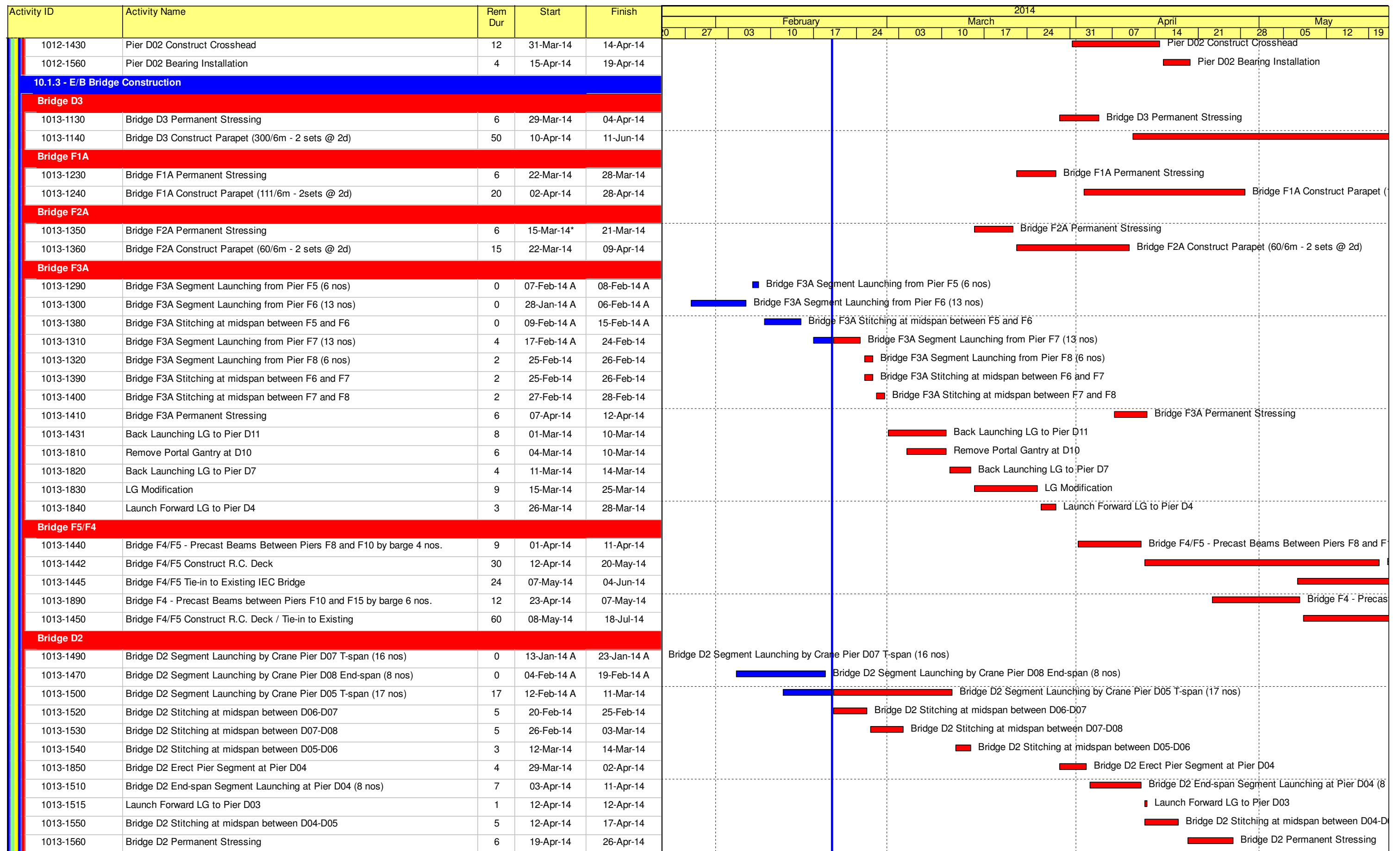
Activity ID	Activity Name	Rem Dur	Start	Finish	2014																				
					March					April					May					June					
					7	24	03	10	17	24	31	07	14	21	28	05	12	19	26	02	09	16			
1061-1880	Bored Pile Ramp - BM20	15	06-Jun-14	23-Jun-14																					
1061-1890	Bored Pile Ramp - BM31	15	11-Jun-14	27-Jun-14																					
10.7 - Section X - Miscellaneous Works																									
10.7.1 - TTM Stages																									
1071-1005	TTA Stage 2A - TMLG / TD / Police Consultation and Endorsement	36	02-May-14*	13-Jun-14																					

-  Remaining Level of Effort
-  Actual Level of Effort
-  Actual Work
-  Remaining Work
-  Critical Remaining Work
-  Milestone

Contract HY/2009/19

Three Month Rolling Programme (20 Mar 2014 to 19 Jun 2014)

3MRP
 3MRP - Mar 2014 to Jun 2014
 Page 9 of 9



- █ Remaining Level of Effort
- █ Actual Level of Effort
- █ Actual Work
- █ Remaining Work
- █ Critical Remaining Work
- ◆ Milestone

Contract HY/2009/19

Three Month Rolling Programme (20 Feb 2014 to 19 May 2014)

3MRP

3MRP - Feb 2014 to May 2014

Activity ID	Activity Name	Rem Dur	Start	Finish	2014																		
					February					March				April				May					
					0	27	03	10	17	24	03	10	17	24	31	07	14	21	28	05	12	19	
1013-1570	Bridge D2 Construct Parapet (320/6m, 2 sets @ 2d)	54	29-Apr-14	03-Jul-14																			
Bridge D1																							
1013-1591	Bridge D1 Pier Segment Erection at Pier D03	4	14-Apr-14	17-Apr-14																			
1013-1592	Launch Forward LG to Pier D02	1	19-Apr-14	19-Apr-14																			
1013-1860	Bridge D1 Pier Segment Erection at Pier D03	4	22-Apr-14	25-Apr-14																			
1013-1600	Bridge D1 Segment Launching T-span Pier D03 (16 nos)	4	26-Apr-14	30-Apr-14																			
1013-1605	Bridge D1 Segment Launching End-span at Pier D04 (7 nos)	4	02-May-14	06-May-14																			
1013-1630	Bridge D1 Stitching at midspan between D03-D04	5	07-May-14	12-May-14																			
1013-1870	Launch Forward LG to Pier D01	1	17-May-14	17-May-14																			
1013-1880	Bridge D1 Pier Segment Erection at Pier D01	3	19-May-14	21-May-14																			
All E/B Bridges (Common)																							
1013-1770	Procurement of Parapet Sub-contractor	0	21-Oct-13 A	10-Feb-14 A																			
1013-1780	Parapet Temp. Work Design + ICE	12	11-Feb-14 A	05-Mar-14																			
1013-1790	Parapet Temp. Work Design ER No Adverse Comment	15	06-Mar-14	22-Mar-14																			
1013-1800	Parapet Temp. Work Fabrication	18	06-Mar-14	26-Mar-14																			
1013-1710	Permanent Noise Barrier Type C1 E/B Bridge Ch 1059-1362 (304m)	42	12-May-14	30-Jun-14																			
10.1.4 - Bridge E / Hing Fat Slip Road																							
Pier Construction																							
1014-1040	Pier E1b Construct Pier/Column	0	16-Jan-14 A	29-Jan-14 A																			
1014-1070	Pier E1a Construct Pier/Column	0	25-Jan-14 A	31-Jan-14 A																			
1014-1050	Pier E1b Construct Crosshead	18	20-Feb-14	12-Mar-14																			
1014-1080	Pier E1a Construct Crosshead	18	20-Feb-14	12-Mar-14																			
1014-1090	Pier E1a/E1b Bearing installation	6	13-Mar-14	19-Mar-14																			
Bridge Construction																							
1014-1174	Bridge E - Pier E1 to E2 Install Precast Beam (3 nos.)	5	20-Mar-14	25-Mar-14																			
1014-1175	Bridge E - Pier E1 to D1 Install Precast Beam (3 nos.)	5	12-May-14	16-May-14																			
10.5 - Temporary Bridge																							
10.5.1 - Temporary Bridge 'TA'																							
1051-1017	Temporary Bridge TA1 - Bridge Decking + Tie-in to Existing HFSR	6	23-Sep-13 A	10-May-14																			
1051-1018	Temporary Bridge TA1 - Parapet	6	13-Jan-14 A	10-May-14																			
10.5.3 - Temporary Bridge 'TD'																							
1053-1050	Temporary Bridge "TD" Between Piers F8 and F10 - Structural Support	18	19-Apr-14	12-May-14																			
1053-1060	Temporary Bridge "TD" Between Piers F8 and F10 - Bridge Deck & Parapet	24	13-May-14	10-Jun-14																			
10.6 - Tunnel Approach Ramp																							
10.6.1 - Approach Ramp (Excluding Portion IIB)																							
Bored Piles																							
1061-1670	Remaining Pre-drilling for Approach Ramp Bored Piles	36	19-Jul-13 A	02-Apr-14																			
1061-1750	Bored Pile Ramp - BN37	0	13-Jan-14 A	24-Jan-14 A																			
1061-1720	Bored Pile Ramp - BM39	4	10-Jan-14 A	24-Feb-14																			
1061-1800	Bored Pile Ramp - BM47	0	22-Jan-14 A	07-Feb-14 A																			
1061-1770	Bored Pile Ramp - BM35	7	08-Feb-14 A	27-Feb-14																			
1061-1780	Bored Pile Ramp - BM48	8	12-Feb-14 A	28-Feb-14																			
1061-1785	Bored Pile Ramp - BM36	15	28-Feb-14	17-Mar-14																			
1061-1790	Bored Pile Ramp - BM30	15	01-Mar-14	18-Mar-14																			

- Remaining Level of Effort
- Actual Level of Effort
- Actual Work
- Remaining Work
- Critical Remaining Work
- ◆ Milestone

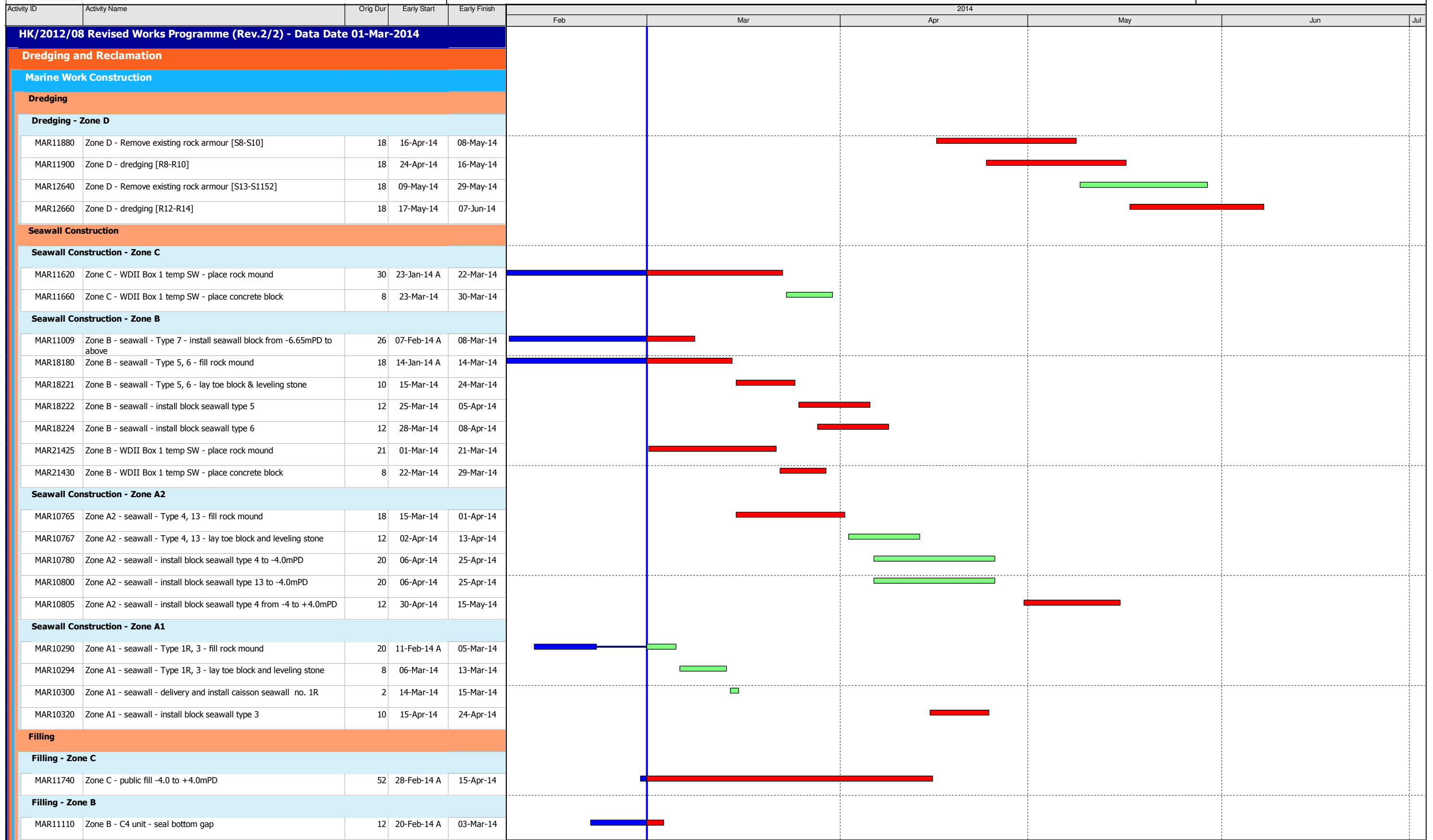
Contract HY/2009/19

Three Month Rolling Programme (20 Feb 2014 to 19 May 2014)

3MRP

3MRP - Feb 2014 to May 2014

Page 7 of 8



Data Date: 01-Mar-14

- ◆ Current Milestone
- Actual Work
- Critical Remaining Work
- Remaining Work
- Remaining Level of Effort

3-Month Rolling Programme for Works outside CRIII Area
(Mar 2014 to May 2014)

Date	Revision	Checked	Approved
01-Mar-14	Rev. 2		



Activity ID	Activity Name	Orig Dur	Early Start	Early Finish	2014						
					Feb	Mar	Apr	May	Jun	Jul	
Section VIII - Landscape Softworks											
Soft Landscaping Works											
SVIII10020	Sec VIII - Tree Felling/Transplanting at Portion 2 & 2A	90	20-Nov-13 A	12-Jun-14							
Section X - Protection & Preservation of Trees											
Soft Landscaping Works											
SX10020	Sec X - Protection & Preservation of Trees	1632	31-Jan-13 A	20-Jul-17							

Activity ID	Activity Name	Original Duration	Start	Finish	April 2014					May 2014					June 2014				
					23	30	06	13	20	27	04	11	18	25	01	08	15	22	29
HY/2010/08: CWB-SR8 Three Months Rolling Programm					1414	21-Mar-13 A	20-Nov												
Works in TS3					99	15-Apr-14	15-Ai												
TS3 East & West Reclamation Works					99	15-Apr-14	15-Ai												
TS3E - Reclamation (Advance Works)					99	15-Apr-14	15-Ai												
TS3E.MW.1080	TS3E South - Dredging Works (Type 3)	19	15-Apr-14*	12-May															
TS3E.MW.1140	C15 - Complete TZ2 (Forecast Completion of TZ2)	0		31-May															
TS3E.MW.1085	TS3E South - Dredging Works (Type 1 & 2)	28	13-May-14*	14-Jun															
TS3E.MW.1090	TS3E South - Rockfill + Levelling	20	06-Jun-14	28-Jun															
TS3E.MW.1040	TS3E North - Seawall Block Installation	30	03-Jun-14	08-Jul															
TS3E.MW.1100	TS3E South - Seawall Block Installation	48	20-Jun-14	15-Aug															
Works in SR8 (Open Cut Method)					230	16-Nov-13 A	27-Ai												
SR8 - Cofferdam & Cut & Cover Tunnel Works					230	16-Nov-13 A	27-Ai												
SR8 East Bound - (Seaside to Victoria Road / IEC Central Divider)					190	16-Nov-13 A	11-Ju												
TTA Stage 0 - East Bound					164	16-Nov-13 A	10-Ju												
Stage 0B - East Bound (Seaside) (Ref. DRG. No. CDD/SR8/081)					24	16-Nov-13 A	20-M												
SR8.EB.0240	Demolish Island / Construct & Relocate New Bus Stop (West of Footbridge)	24	16-Nov-13 A	20-Mar															
Stage 1A - East Bound (Seaside) (Ref. DRG. No. CDD/SR8/082)					41	28-Feb-14 A	17-Aj												
SR8.EB.1060	Trim down the Sheet Pile and Pipe Pile and construct the Gas Main Trough	12	08-Mar-14 A	21-Mar															
SR8.EB.1050	Carry out Stage 1A TAM Grout	10	07-Apr-14*	17-Apr															
Water Mains					7	28-Feb-14 A	28-M												
SR8.EB.1170	Connect Water Lines including Test report	7	28-Feb-14 A	28-Mar															
Telecoms (PCCW)					29	03-Mar-14 A	31-M												
SR8.EB.1240	Lay cable containment (PVC Pipes) for Telecom Cables (PCCW)	8	03-Mar-14 A	29-Mar															
SR8.EB.1180	Pull Telecom Cables to New Containment	1	31-Mar-14*	31-Mar															
SR8.EB.1190	Connect and Test Telecom Cables	15	19-Mar-14 A	31-Mar															
Gas Mains					5	19-Mar-14 A	25-M												
SR8.EB.1540	Connect Gas Line	3	19-Mar-14 A	22-Mar															
SR8.EB.1290	Backfill Trench	2	24-Mar-14*	25-Mar															
Stage 1B - East Bound (Seaside) (Ref. DRG. No. CDD/SR8/082)					59	26-Mar-14	10-Ju												
SR8.EB.1400	Carry-out pretreatment for Stage 1B Sheet Pile	4	26-Mar-14	29-Mar															
SR8.EB.1210	Carry-out preboring for Stage 1B Sheet Pile	8	31-Mar-14	09-Apr															
SR8.EB.1220	Carry-out Stage 1B Sheet Piling works	6	08-Apr-14	14-Apr															
SR8.EB.1140	Carry out Pipe Piling Work (A21-A24,A24a,A24b, A34-A35, B2-B8, B14-B18) 20nos.	28	11-Apr-14	19-May															
SR8.EB.1530	Pre-fabrication of Steel Traffic Deck	36	01-Apr-14*	19-May															
SR8.EB.1255	Carry-out Stage 1B TAM Grout + Jet Grouting (12nos)	8	17-May-14	26-May															
SR8.EB.1250	Install King Post for Traffic Deck (8 nos.)	12	20-May-14	03-Jun															
SR8.EB.1260	Construct Traffic Deck and Temporary Road (including Road Marking & Traffic Signage)s	18	20-May-14	10-Jun															



中國建築工程(香港)有限公司
CHINA STATE CONSTRUCTION ENGRG. (HONG KONG) LTD.

- Remaining Level of Effort
- Remaining Work
- Critical Remaining Work
- ◆ Milestone
- ◆ Milestone - Non C

Page 1 of 3

China State Construction Engineering (Hong Kong) Ltd






Contract No. HY/2010/08 - Central Wan Chai By Pass - Tunnel (SR8 Section)

Date	Revision	Checked	Approved
20-Mar-14	3 Month Rolling Programme	DL	

Activity ID	Activity Name	Original Duration	Start	Finish	April 2014							May 2014				June 2014			
					23	30	06	13	20	27	04	11	18	25	01	08	15	22	29
Works in Victoria Park																			
Re-Provisioning Works																			
Bowling Green Office																			
BGO - Construction Works																			
VP_1150	BGO - Underground utilities & foundation works	26	19-Mar-14 A	21-May															
VP_1180.01	BGO - Base Slab	24	22-May-14	19-Jun															
VP_1180.02	BGO - Walls	36	06-Jun-14	18-Jul-															
Tree Transplanting at Portion XIV (Victoria Park Open Space)																			
VP_1040	Tree Transplanting & Upkeep at Portion XIV	347	16-Oct-13 A	13-Dec															
Mooring Components Upkeep (CBTS and ATS)																			
Works for Public Works Regional Laboratory (North Lantau)																			



中國建築工程(香港)有限公司
CHINA STATE CONSTRUCTION ENGRG. (HONG KONG) LTD.

-  Remaining Level of Effort
-  Remaining Work
-  Critical Remaining Work
-  Milestone
-  Milestone - Non C

Page 3 of 3

China State Construction Engineering (Hong Kong) Ltd

Contract No. HY/2010/08 - Central Wan Chai By Pass - Tunnel (SR8 Section)

Date	Revision	Checked	Approved
20-Mar-14	3 Month Rolling Programme	DL	